
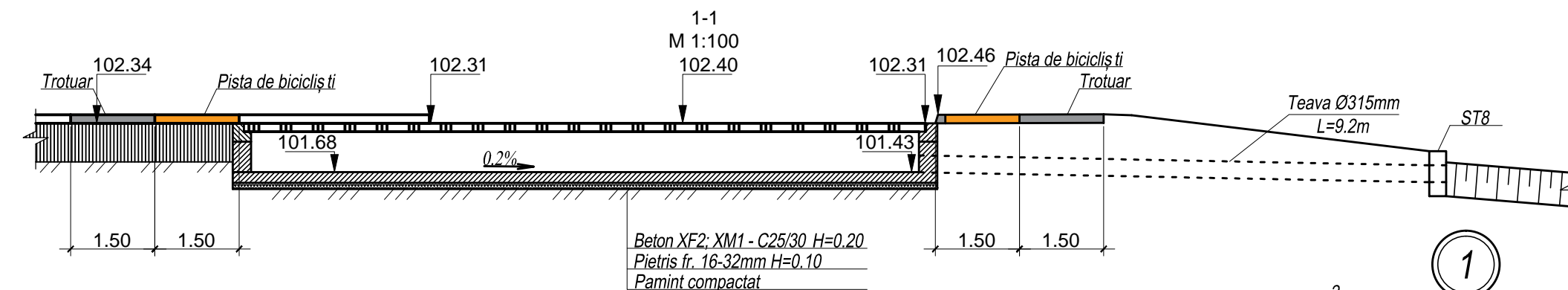


Technical drawing of a road cross-section showing a 12.30m wide road with a 9.0m wide sports road section. The drawing includes dimensions for various zones: Zona verde (green), Trotuar (sidewalk, grey), and Pista de bicicliști (bicycle lane, orange). Key dimensions include 1.50m for green and sidewalk widths, 3.4m for the bicycle lane, and 0.165m for the road edge. The sports road section is 9.0m wide and contains 21 rectangular elements, each 0.57m wide, totaling 11.97m. A central section of 0.098m wide elements is also shown. The drawing includes a curve with a radius of R5.0 and a section labeled ST8 with a width of 5.0m. A detail of a 'Teava Ø315mm L=9.2m' is shown on the right.

Pozitia	Marcarea	Denumirea	Nr. buc.	Nota
OP1		Perna de baza OP1		
1	SM EN 10080:2014 	Armatura A500C Ø 12 L=12120	16	172.6kg
2	SM EN 10080:2014	Armatura A240 Ø 6 L=920	78	16.0kg
3	SM EN 10080:2014	Armatura A500C Ø 12 L=1284	14	16.0kg
4	SM EN 10080:2014	Armatura A240 Ø 6 L=780	18	3.1kg
		Materiale		
5		Beton XC4; XF2 - C25/30 - OP1		0.75m ³
6		Beton XF2; XM1 - C25/30 - Canal din beton		6.10m ³



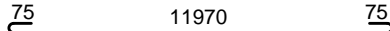
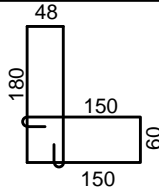

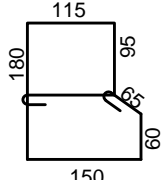
Technical drawing of a stepped profile (Fig. 1.10). The drawing shows a cross-section with the following dimensions:

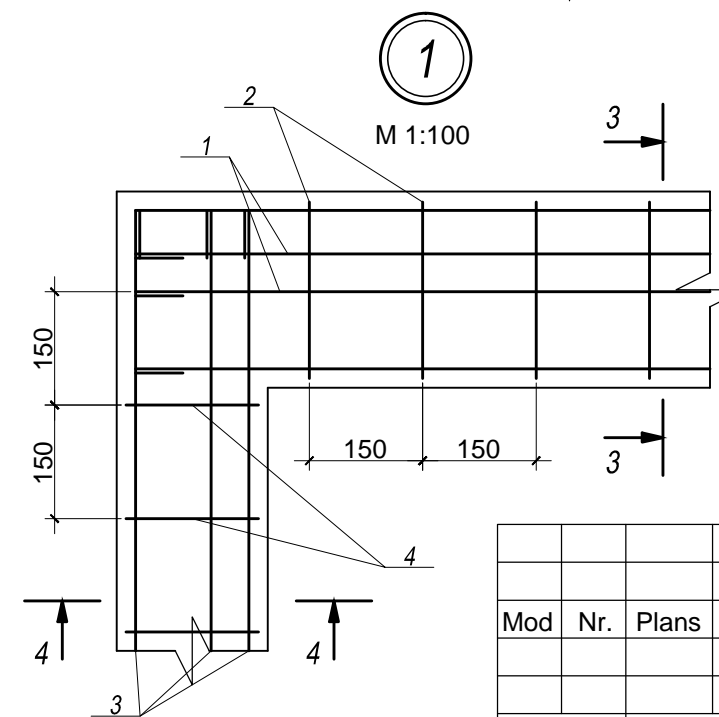
- Top horizontal segments: 98 and 102.
- Vertical segments: 120 (left), 110 (right), and 25 (bottom right).
- Internal horizontal segments: 25 (top left), 25 (top right), and 25 (bottom right).
- Bottom horizontal segment: 200.
- Section lines: Line 1 is on the left vertical face, and line 2 is on the bottom horizontal face.

Technical drawing of a stepped profile (Fig. 1.10). The drawing shows a profile with a total width of 200 and a total height of 220. The profile is defined by the following dimensions:

- Top horizontal segment: 165
- Right vertical segment: 35
- Inner vertical segment (right side): 120
- Inner horizontal segment (top): 25
- Inner horizontal segment (bottom): 25
- Inner vertical segment (left side): 110
- Left vertical segment: 25
- Bottom horizontal segment: 25

The drawing includes dimension lines and arrows indicating the measurements. The profile is labeled with '4' and '3'.

Poz.	Eschiz
1	
2	
3	
4	



						23/2022 - DA				
Mod	Nr.	Plans	Nr.d	Semnat.	Data	Servicii de corectare și actualizare a documentației de proiect și deviz pentru obiectul „Reparația capitală a părții carosabile a str. Sportive (de la str. Stamati pînă la str. Gluhovschi) din mun. Bălți				
						Drumuri pentru automobile		Stadia	Desen	Nr. desen
								PE	18	
Manager	Pasecinik A.									
ISP	Untila N.				Rigola dreptunghiulara din beton armat PC 1+73.1		"APAST&CO" S.R.L. mun. Chișinău			
Elaborat	Untila N.									